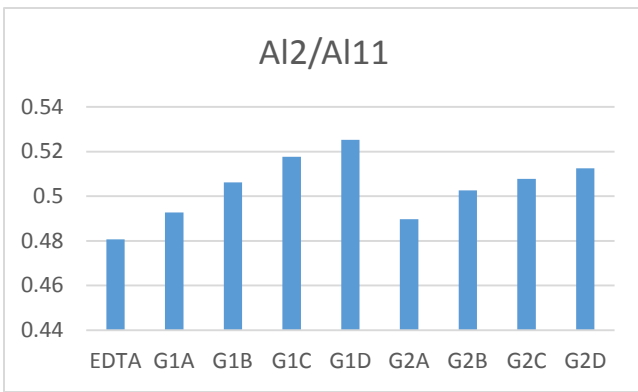
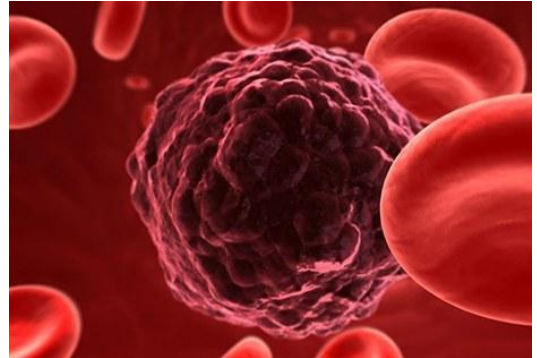


Merisis™ Circulating tumor cells (CTC) separation tube

Merisis™ CTC separation tube is a simple to use, rapid and efficient system for separation of disseminated circulating tumor cells from human peripheral blood. The system combines the advantages of the cell separation by density gradient centrifugation (rapid, reproducible, cost effective) with highest recovery rates.

It consists of a 13 ml glass tube with a inert polyester gel barrier inserted on top of the unique separation medium. It is perfectly suited to ensure routine and standardized enrichment of circulation tumor cells disseminated by a solid epithelial tumor or melanoma.



Competitiveness of Merisis™ CTC separation tubes:

- ✓ Performance in about 30 - 45 minutes
- ✓ Reproducible recovery rates: >70%
- ✓ Depletion of blood cells up to 6 logs
- ✓ No special lab requirement
- ✓ Enrichment directly from whole blood

